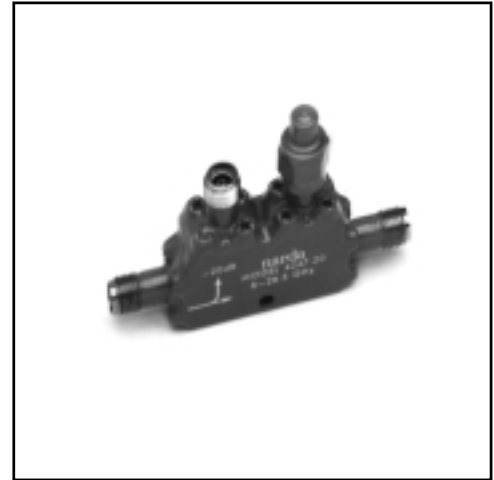


# Couplers

1.7-26.5 GHz

## 2.92 mm CONNECTORS ULTRA BROADBAND COUPLERS

- Ultrabroadband
- Low Return Loss
- Excellent Flatness
- Superior Directivity



### SPECIFICATIONS

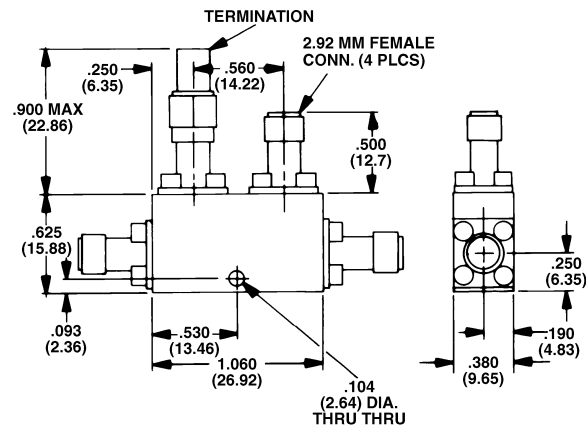
FREQUENCY RANGE (GHz)	MODEL	COUPLING (dB)	DIRECTIVITY (dB)		INSERTION LOSS		VSWR		FREQUENCY* SENSITIVITY (dB) Max	POWER		WEIGHT (Max)	
			(Min)		EXCLUDING COUPLED POWER	TRUE	PRIMARY LINE Max	SECONDARY LINE Max		AVG. Watts	PEAK kW	Oz	Gr
6-26.5	4247B-10	10±1	12		0.9	1.5	1.5	1.5	±0.75	30	0.2	1.0	28
	4247-20	20±1	13		0.7	0.8	1.45	1.45	±0.8	±1	20	1.0	28

FREQUENCY RANGE (GHz)	MODEL	COUPLING (dB)	DIRECTIVITY (dB)		INSERTION LOSS		VSWR		FREQUENCY* SENSITIVITY (dB) Max	POWER		WEIGHT (Max)	
			(Min)		EXCLUDING COUPLED	TRUE	PRIMARY LINE Max	SECONDARY LINE Max		AVG. Watts	PEAK kW	Oz	Gr
18-26.5	4017C-10	10±1	12		0.9	1.5	1.5	1.5	±0.75	30	0.2	1.0	28
	4017-20	20±1	13		0.7	0.8	1.45	1.45	±0.8	30	0.2	1.0	28

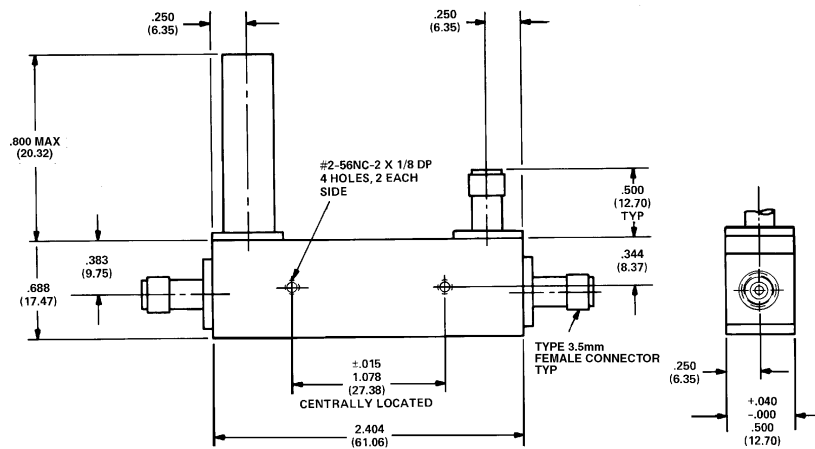
FREQUENCY RANGE (GHz)	MODEL	COUPLING (dB)	DIRECTIVITY (dB)		INSERTION LOSS		VSWR		FREQUENCY* SENSITIVITY (dB) Max	POWER		WEIGHT (Max)	
			1.7-12.4	12.4-26.5	EXCLUDING COUPLED POWER	TRUE	PRIMARY LINE Max	SECONDARY LINE Max		AVG. Watts	PEAK kW	Oz	Gr
1.7-26.5	4227-16	16±1.5	15	12	0.80	0.90	1.45	1.45	±1.0	20	0.2	1.9	54

\*For all models, Frequency sensitivity is included in coupling

## OUTLINE DRAWINGS



MODELS 4247B, 4247, 4017C



MODEL 4227

Dimensions in parentheses are in millimeters and for reference only.

All dimensions are Max. unless otherwise specified.